



PORTFOLIO 03

Treating the most complicated root anatomy with GentleWave®



ROOT CANAL SPECIALTY
ASSOCIATES

Root Canal Specialty Associates
provides care in all phases of surgical
and nonsurgical endodontics. With
decades of combined experience,
four locations, and 10 endodontists,
we have you covered.

LOCATIONS

Ann Arbor
Brighton
Livonia
West Bloomfield

DOCTORS

Dr. Robert Coleman*
Dr. Steven Edlund*
Dr. Martin Goode
Dr. Wesley Ichesco
Dr. Alexandra Martella*
Dr. Christopher McWatters
Dr. Andrew Racek*
Dr. Michael Shapiro*
Dr. Dmitry Vodopyanov
Dr. Martha Zinderman



* Active Diplomate
of the American Board
of Endodontists

Adopting new technology helps us make better diagnoses and treatment decisions to help your patients feel better, faster.

Endodontic
excellence *for*

50
YEARS

This year marks five decades of saving teeth and providing your patients with optimal, quality care. We're proud of that, and we're especially grateful for your continued partnership and trust.

Our long-term commitment to our specialty and its latest advancements allows us to continue treating the most difficult cases more predictably. We're excited to be the first endodontic practice in Michigan to adopt the Sonendo GentleWave® system to help us clean and disinfect the most complicated root anatomy.

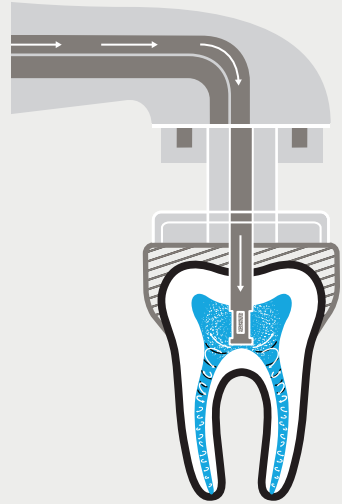
TECHNOLOGY AND TREATMENT

GentleWave® by Sonendo –

The GentleWave® System uses a procedure instrument that delivers sound waves within the root canal system in conjunction with continuous irrigation. This results in a more thorough cleaning and disinfection of the most complicated root canal anatomy. The GentleWave® System also allows us to conserve more tooth structure and better maintain tooth integrity and resistance to fracture.

We offer GentleWave® at all four of our locations:

Ann Arbor
Brighton
Livonia
West Bloomfield



WHEN IS GENTLEWAVE® THE RIGHT TREATMENT?

Most teeth are candidates for GentleWave®, as long as a sealed platform can be created.

- All caries must be removed first
- Teeth with subgingival caries may be challenging
- If the crown has an open margin, removal is usually indicated prior to GentleWave®

Contraindications

- Roots that open directly into the sinus
- Open apices
- Fractured teeth
- Teeth with external resorption communicating with the pulp

For more information about GentleWave® call us at (734) 261-7800 to schedule a time to talk with us.

Mandibular molar with “C” shaped canal.

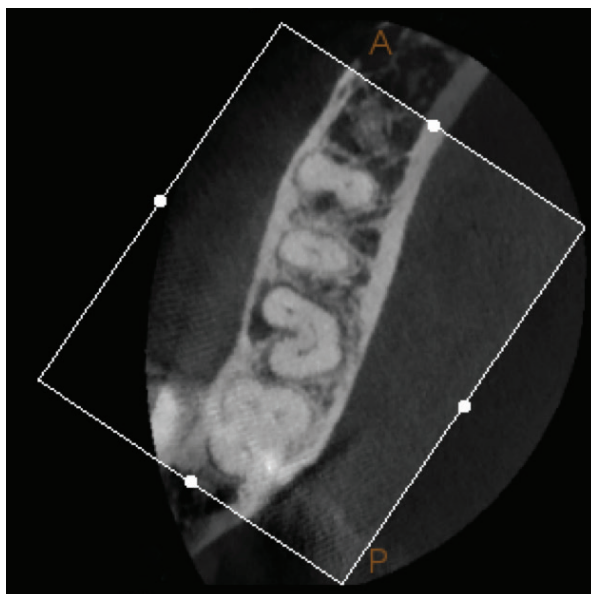
TOOTH #31

DIAGNOSIS

Patient presented with a non-vital pulp and asymptomatic apical periodontitis. The CBCT axial view confirms the presence of a “C” shaped root anatomy with three separate canals connected by ribbons of pulpal tissue.

TREATMENT

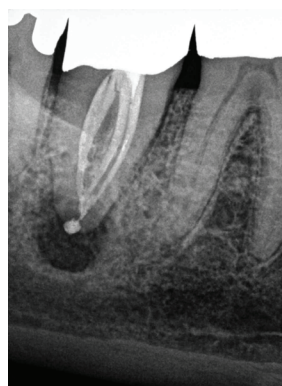
Three main canals were located and instrumented. This was followed by the Sonoendo GentleWave® procedure to augment cleaning and disinfection of this difficult anatomy. The postoperative radiograph confirms the filling of several canal system fins and irregular extensions.



CBCT



Pre-Op



Completion

Mandibular bicuspid with aberrant anatomy.

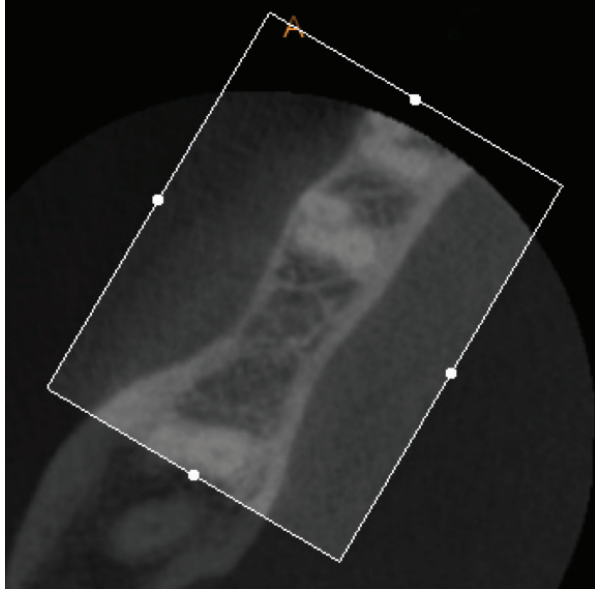
TOOTH #29

DIAGNOSIS

Patient's general dentist initiated endodontic treatment; but, was unable to locate any canals. Clinical testing confirmed the presence of a non-vital pulp and symptomatic apical periodontitis. The CBCT axial view displays three separate roots present in the apical third.

TREATMENT

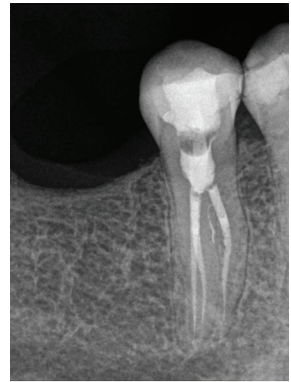
Three canals were located and instrumented followed by the Sonendo GentleWave[®] procedure to augment cleaning and disinfection. The postoperative radiograph confirms the filling of three canals plus a lateral canal exiting on the distal aspect of the mesiobuccal root.



CBCT



Pre-Op



Completion

Mandibular molar with canal anastomosis and multiple portals of exit.

TOOTH #30

DIAGNOSIS

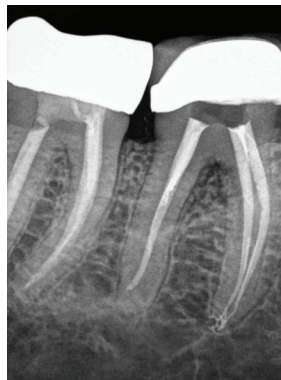
Patient presented with a non-vital pulp and symptomatic apical periodontitis. The preoperative radiograph did not display any atypical findings.

TREATMENT

Three canals were located and instrumented followed by the Sonendo GentleWave® procedure to augment cleaning and disinfection. The post-operative radiograph displays an anastomosis between the mesial canals in the apical third of the root and the canals had multiple portals of exit.



Pre-Op



Completion

Mandibular molar with canal anastomosis.

TOOTH #30

DIAGNOSIS

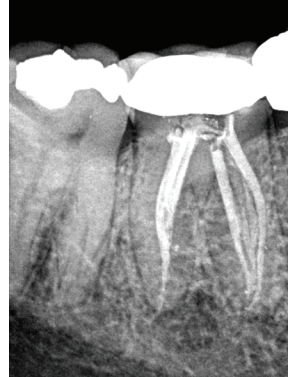
Patient presented with a non-vital pulp and symptomatic apical periodontitis. The preoperative radiograph displayed a widened periodontal ligament space associated with the mesial root apex.

TREATMENT

Four canals were located and instrumented followed by the Sonendo GentleWave® procedure to augment cleaning and disinfection. The postoperative radiograph confirms the filling of the four canals plus an anastomosis between the two mesial canals.



Pre-Op



Completion

Mandibular molar with dilacerated root and additional portal of exit.

TOOTH #18

DIAGNOSIS

Patient presented with a non-vital pulp and chronic suppurative apical periodontitis. The pre-operative radiograph showed a radiolucent area surrounding the apical third of the root.

TREATMENT

Three canals were located and instrumented. The distal root was not negotiable to the radiographic apex with hand or rotary files; so, the Sonendo GentleWave[®] procedure was used to augment cleaning and disinfection. The postoperative radiograph displays a dilacerated distal root and three portals of exit that were cleaned and filled.



Pre-Op



Completion

Mandibular molar with separated instrument.

TOOTH #31

DIAGNOSIS

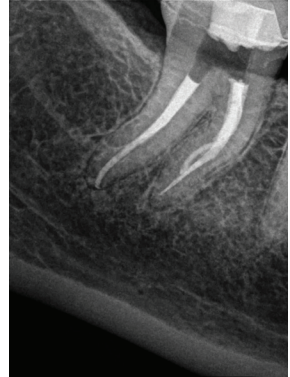
Patient presented with previously initiated endodontic treatment. The preoperative radiograph disclosed that there was a separated instrument in the apical third of the mesial root. No other clinical signs or symptoms were present.

TREATMENT

Three canals were located and it was confirmed that a separated instrument was present in the mesiolingual canal. It was not possible to remove the instrument; so, a SonoDent GentleWave® procedure was performed to augment cleaning and disinfection. The post-operative radiograph shows that the mesiobuccal canal joins with the mesiolingual and there was sealer that extended around and beyond the separated instrument.



Pre-Op



Completion

WHEN TO REFER

Sometimes it's difficult to know when a referral is best for your patient. Guidelines from The American Association of Endodontists (AAE) enable you to assign a level of difficulty to your case, making it easier to decide whether a referral is the best choice.

Visit [rootcanaldocs.com/patient-referral](https://www.rootcanaldocs.com/patient-referral) to download a PDF and see a complete list of considerations to properly evaluate whether a case meets minimal, moderate, or high levels of difficulty.

READY TO REFER?

Visit us at [rootcanaldocs.com](https://www.rootcanaldocs.com) to fill out our online referral form.



ROOT CANAL
SPECIALTY
ASSOCIATES

FOUR LOCATIONS, ONE GREAT EXPERIENCE.

ANN ARBOR
(734) 973-2727

BRIGHTON
(810) 229-7800

LIVONIA
(734) 261-7800

WEST BLOOMFIELD
(248) 626-0600

As one of the largest endodontic specialty practices in the state, we have four offices in SE Michigan to better accommodate your patients. All of our offices have hours Monday through Friday with early morning (7am) openings and evening appointments (until 7pm), and availability on Saturdays in Livonia. Patients can make an appointment at the location that's most convenient for them.

We also participate with most major dental benefit plans so your patient's experience will not only be pleasant, but hassle-free.

Visit rootcanaldocs.com for more information about each of our locations.

Visit rootcanaldocs.com/portfolio to see our best surgical and non-surgical cases, and to download past issues of our Portfolio series.